



Ville pollinerende insekter
15.05.2024

Erfaringer fra Tysvær kommune
v/Dag Fjeldstad





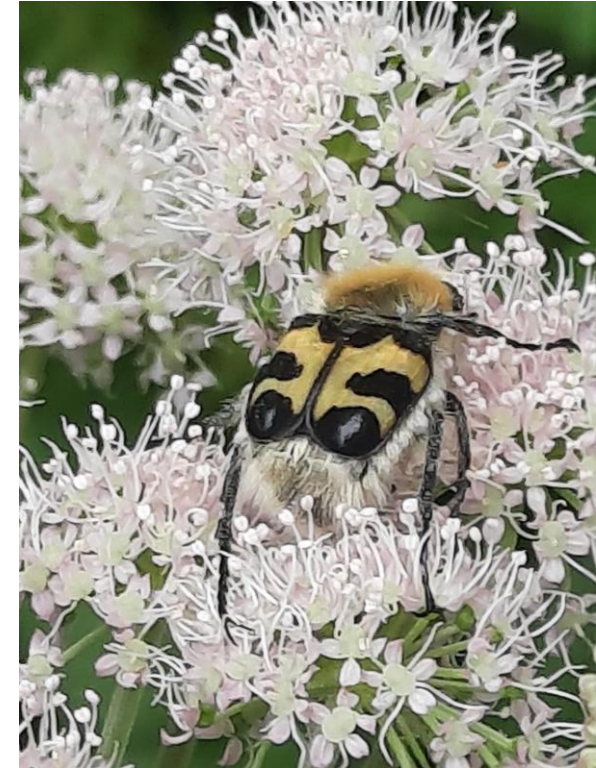
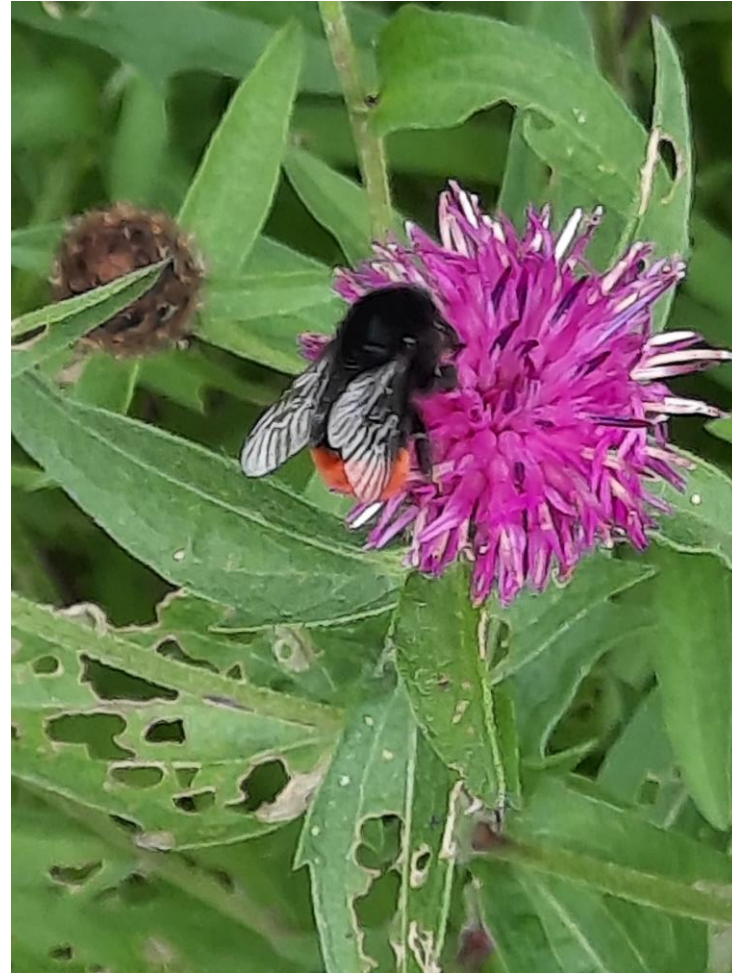
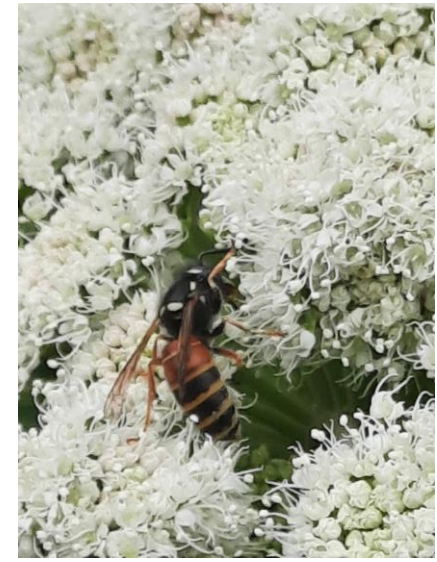
Parkeringsplass ved Førre kirke

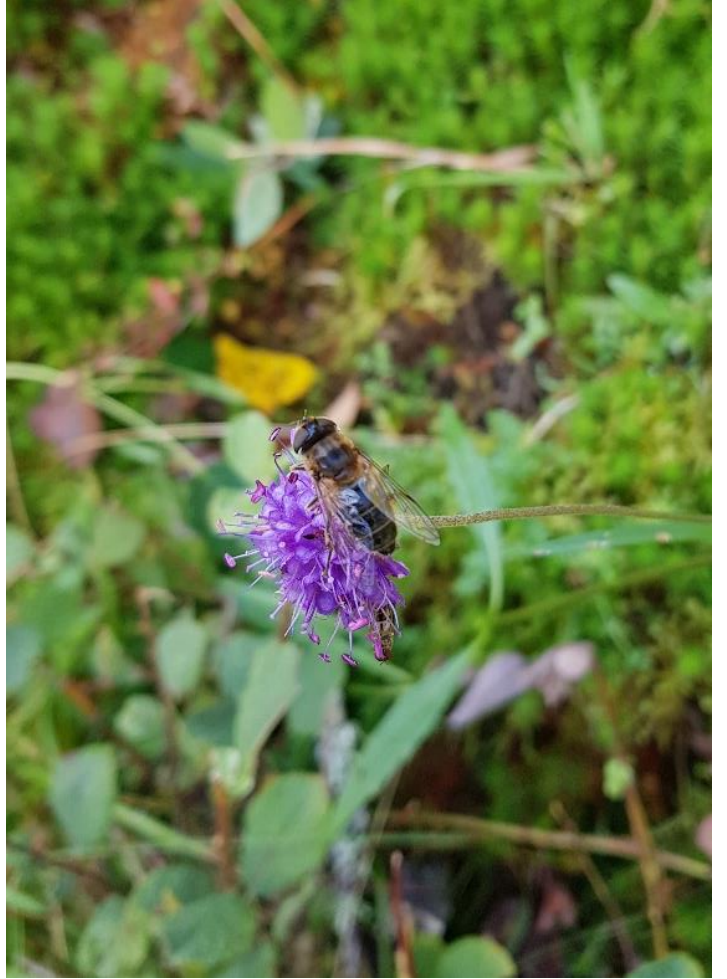
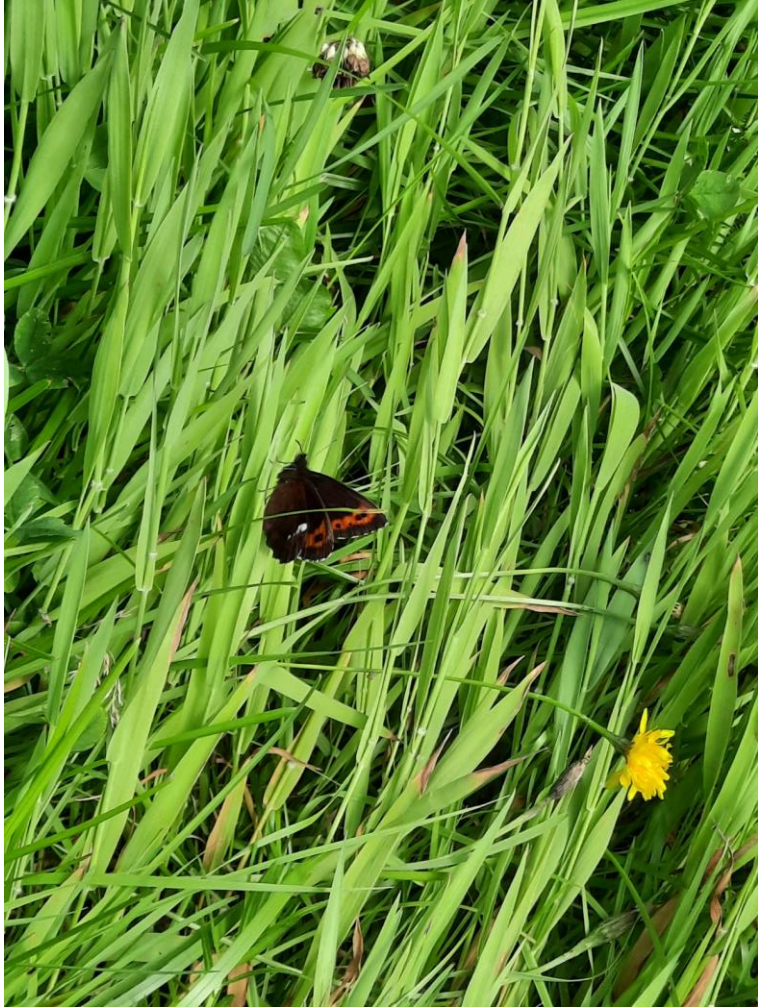




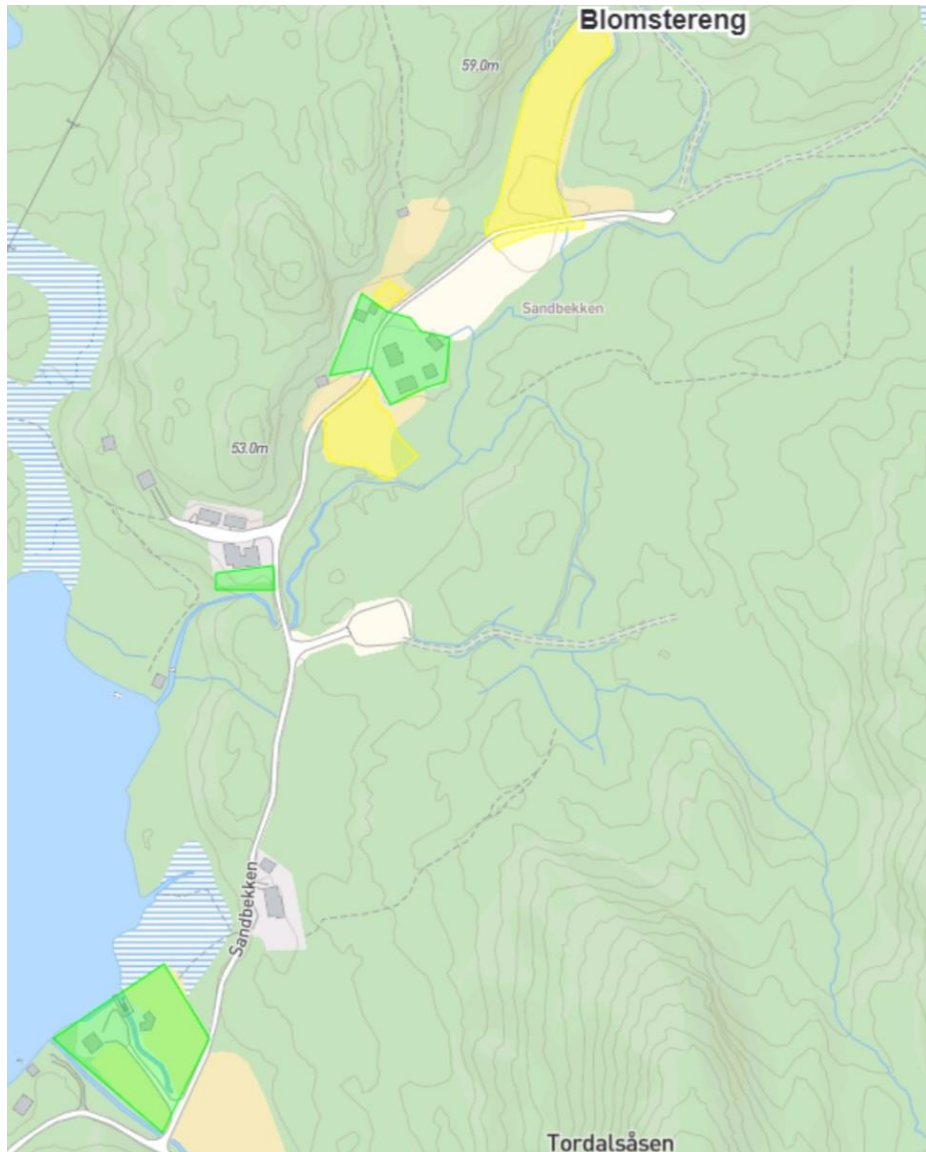


Vegkanter





Sandbekken – etablering av blomstereng







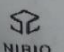
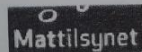
Innsamlet frø



Pluggplanter

Engfrøblanding- partnr. 220222
Regional frøblanding for Sørvestlandet

Vekt %	Art	Opphav	Spire% 2022
5,0	Blodtopp <i>Sanguisorba officinalis</i>	Hå	25
2,0	Firkantperikum <i>Hypericum maculatum</i>	Milde	73
15,0	Fuglevikke <i>Vicia cracca</i>	Sola	75
20,0	Gjerdevikke <i>Vicia sepium</i>	Klepp	36
6,0	Gullris <i>Solidago virgaurea</i>	Gjesdal	62
5,0	Hvitkløver <i>Trifolium repens</i>	Fureneset	71
7,0	Kystgriseøte <i>Hypochaeris radicata</i>	Halland	70
2,0	Ryllik <i>Achillea millefolium</i>	Sola	97
10,0	Rød lønsokblom <i>Silene dioica</i>	Klepp	77
6,0	Skjermelveve <i>Hieracium umbellatum</i>	Sola	77
10,0	Smalkjempe <i>Plantago lanceolata</i>	Sola	65



 Nettovekt
88 gram

NIBIO Landvik Mattilsynet Norge
 EØS-regler og krav - Forseglingsår 2022

Innkjøpt frø



Slått

