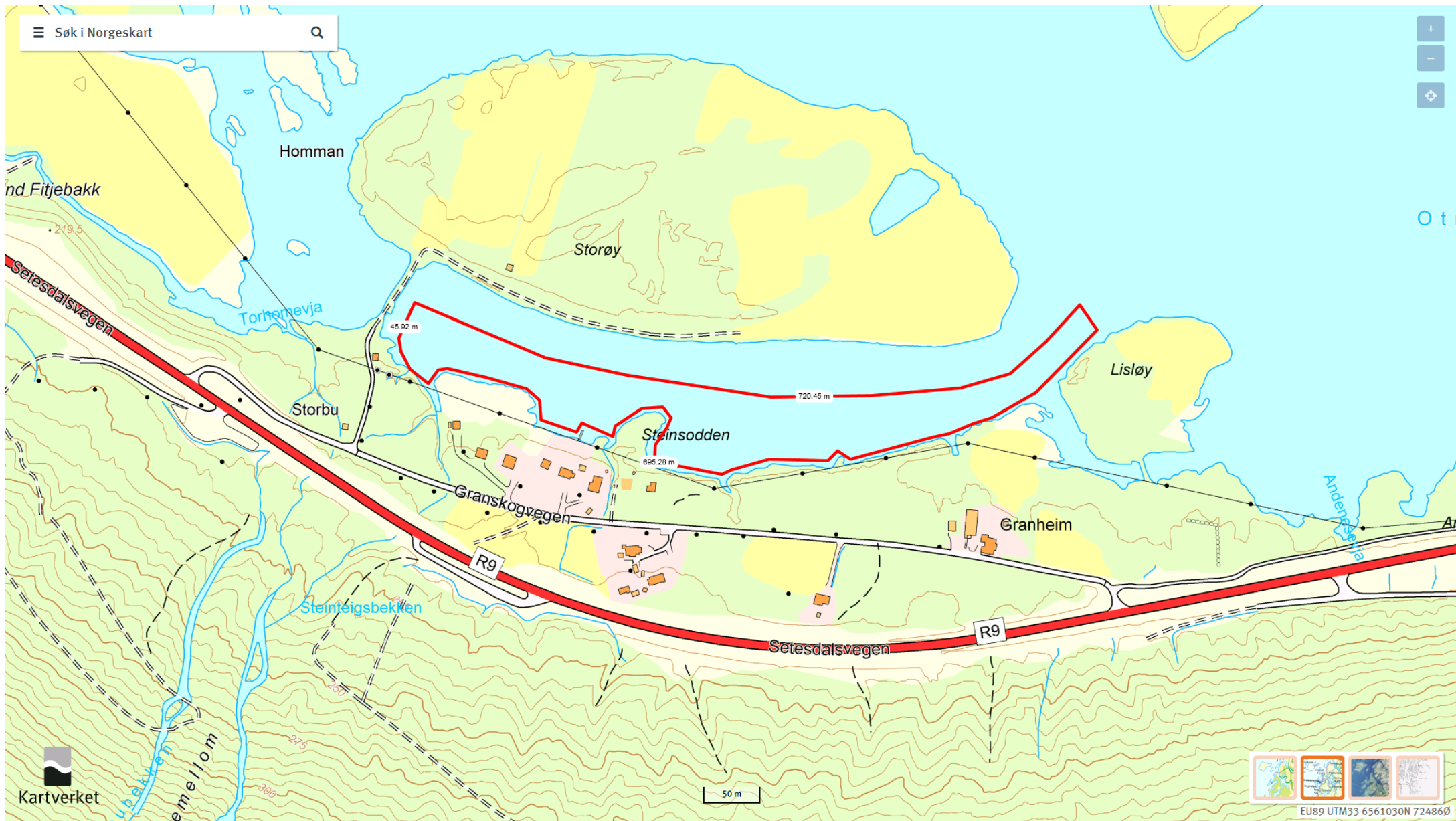


Oversiktskart, krypsiv Bygland 2021-22



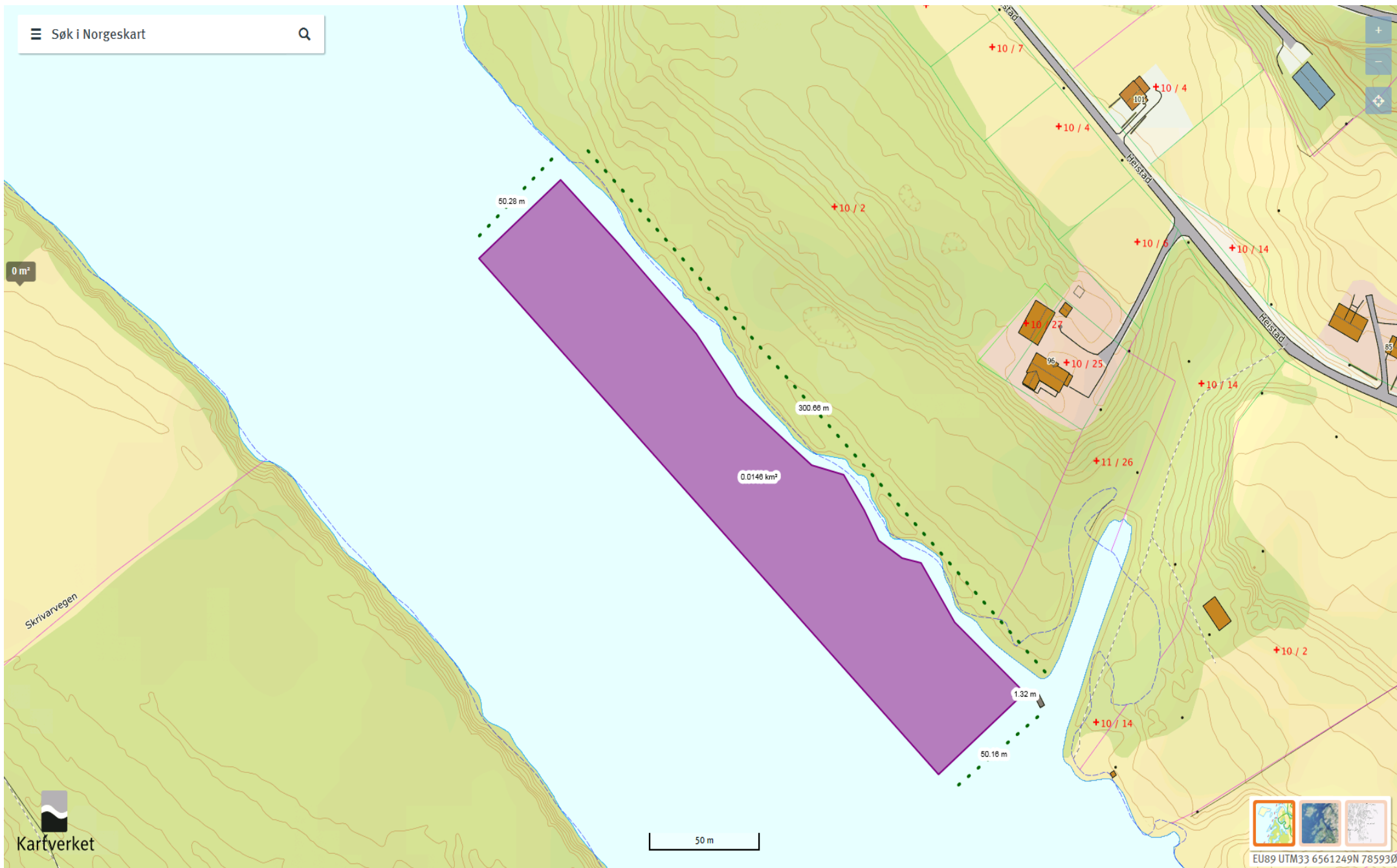
Nr. 1 : Granheim - Storøy, 22 dekar (ca); Omr. ID 56 (litt modifisert i forhold til 2020; frå land til midtlinja mot Storøy. Areal skal kontrollerast).



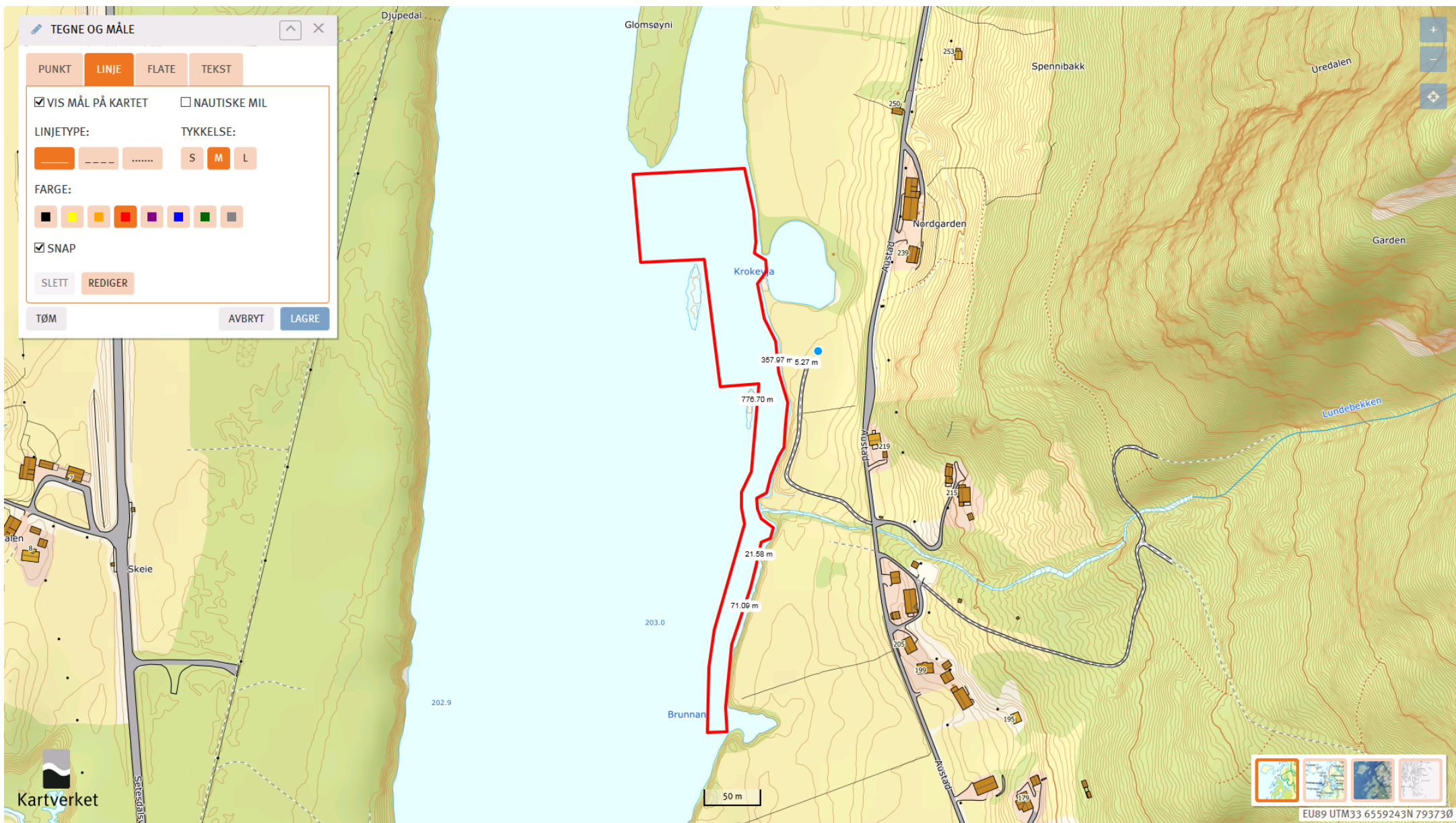
Nr. 2: Sordal, 50 meter X 360 m = 18 dekar. Omr. ID 55 (same areal som i 2020)

The screenshot displays the Norgeskart web application interface. The main map area shows a topographic contour map of a coastal region. A red polygon is drawn over the land, representing a plot of 0.0181 km² (18 dekar). The polygon's vertices are connected by a solid red line, while the boundary with the water is shown as a dashed red line. Labels on the map include 'Floti', 'Haugan', and 'Stegleflot'. A scale bar at the bottom indicates 50 meters. The left sidebar contains a 'TEGNE OG MÅLE' (Drawing and Measure) panel with options for 'PUNKT', 'LINJE', 'FLATE', and 'TEKST'. The 'FLATE' option is selected, and the 'VIS MÅL PÅ KARTET' checkbox is checked. The 'GJENNOMSIKTIGHET' (Transparency) is set to 50%, and the 'FARGE' (Color) is set to red. The 'SNAP' checkbox is also checked. The bottom of the screen shows the Windows taskbar with the Start button, several open applications (Norgeskart, Chrome, Outlook, Word, and Dokumenter), and the system clock showing 16:10 on 28.04.2020.

Nr. 3: Heistad , 50 m X 280 m = 14 dekar. Omr. ID 52 (same areal som i 2020)



Nr. 4: Krokevja Austad 25 dekar (ca) . Omr. ID 51 (Sammenslått omr. 4 og 5 frå 2020). Også her skal areal av sona kontrollrast.



Nr. 5 : Ose ; 50 meter X 320 m = 16 dekar. Omr. ID 48 (same areal som i 2020)

