



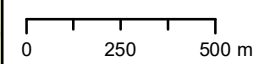


Øyvassheia naturreservat - Høringsforslag

Åmli kommune, Aust-Agder

-  Grense for verneområde
-  Eksisterende verneområde
-  Sti/Skiløype, jf. verneforskrift
-  Traktorslepe, jf. verneforskrift

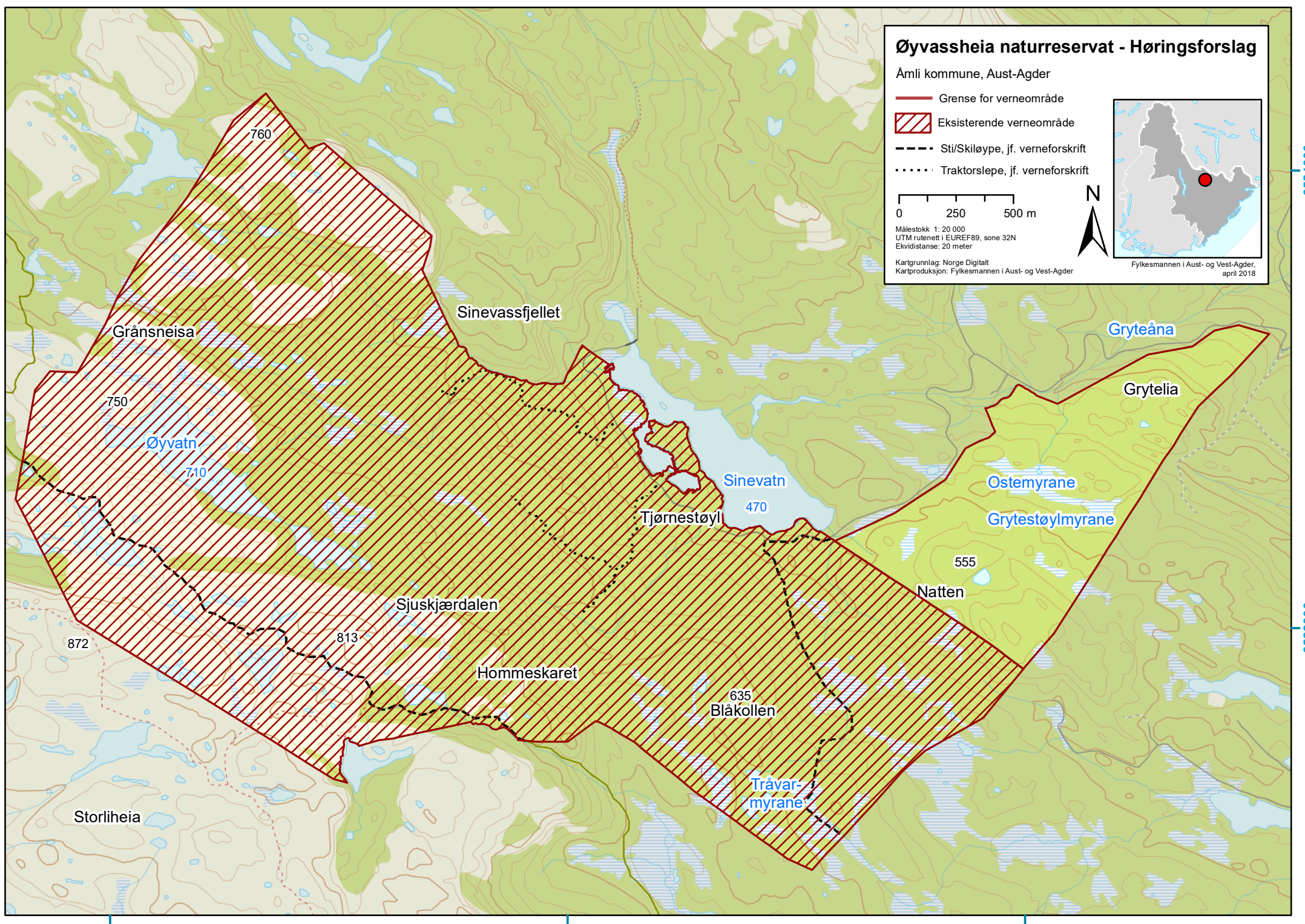


Målestokk 1:20 000
UTM rutenett i EUREF89, sone 32N
Ekvidistanse: 20 meter

Kartgrunnlag: Norge Digitalt
Kartproduksjon: Fylkesmannen i Aust- og Vest-Agder



Fylkesmannen i Aust- og Vest-Agder,
april 2018



454000

456000

458000

6524000

6522000