
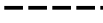
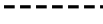

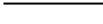




Gitvola og Nordre Kletten naturreservat

Løten og Åmot kommuner, Innlandet

-  Grense for verneområdet
-  Traktorveg, jf. verneforskrift
-  Sti hvor sykling og riding er tillatt, jf. verneforskrift
-  Skiløype, jf. verneforskrift
-  Kabel, jf. verneforskrift
-  Skogshusvære, jf. verneforskrift
-  Utkikkstårn, jf. verneforskrift

Målestokk: 1:28 000 i A4

Ekvidistanse: 20 m

Rutenett: WGS 1984 UTM sone 32

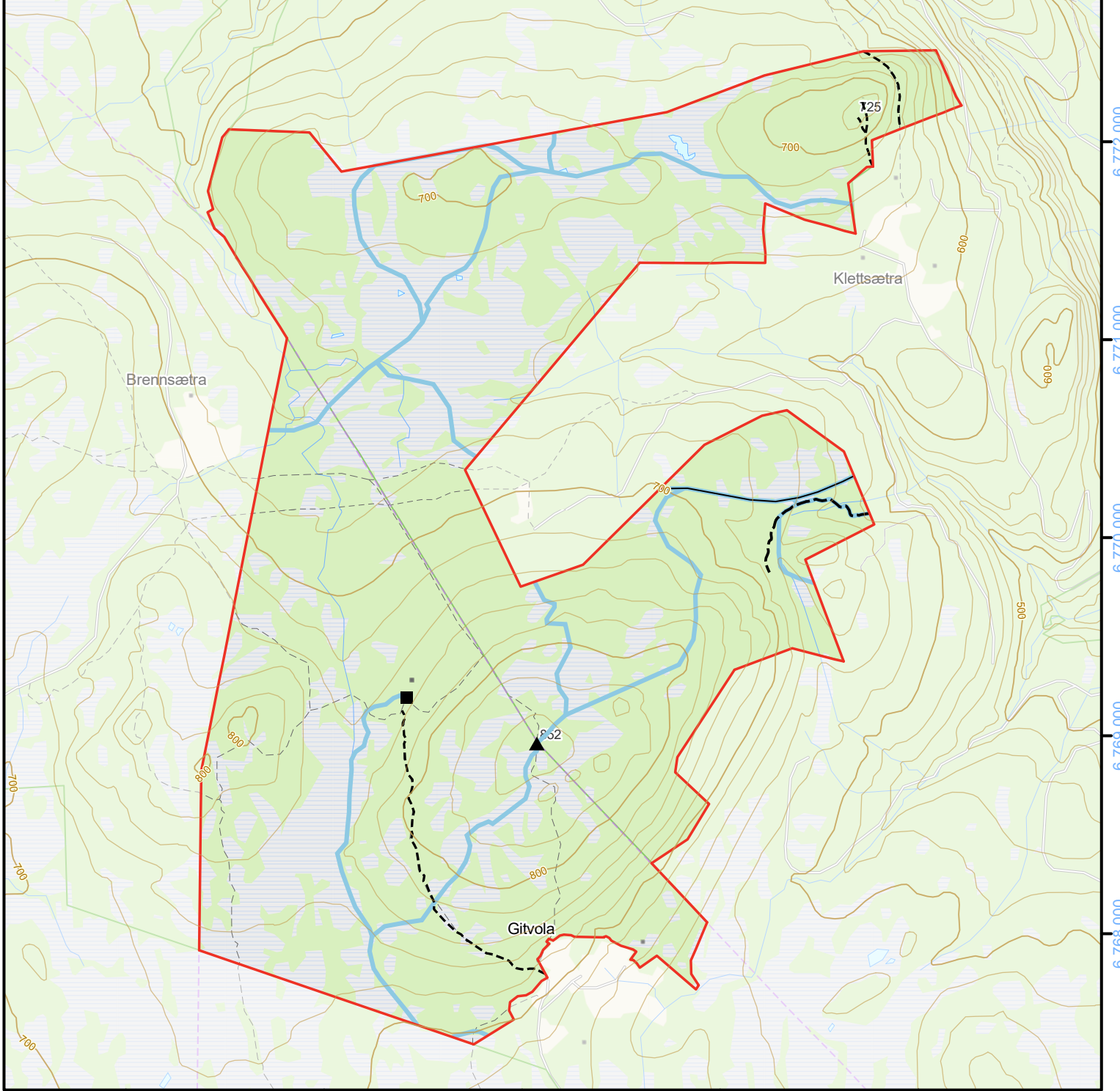
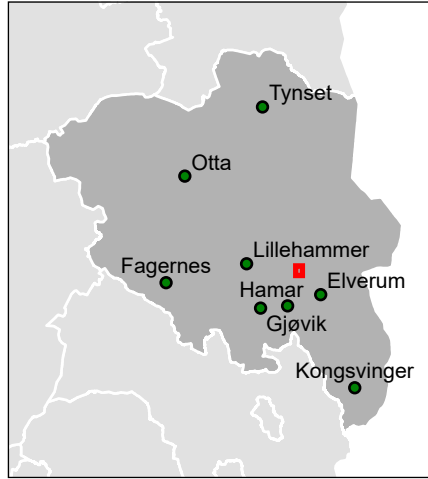
Kartgrunnlag: FKB/ N50

Kilde: Kartverket, Geovekst og kommunene

0 500 1 000 1 500 2 000 m

Kartproduksjon: Stasforvalteren i Innlandet

Klima- og miljødepartementet, desember 2024



620 000

621 000

622 000

623 000

624 000

6 775 000
6 774 000
6 773 000
6 772 000
6 771 000
6 770 000
6 769 000
6 768 000