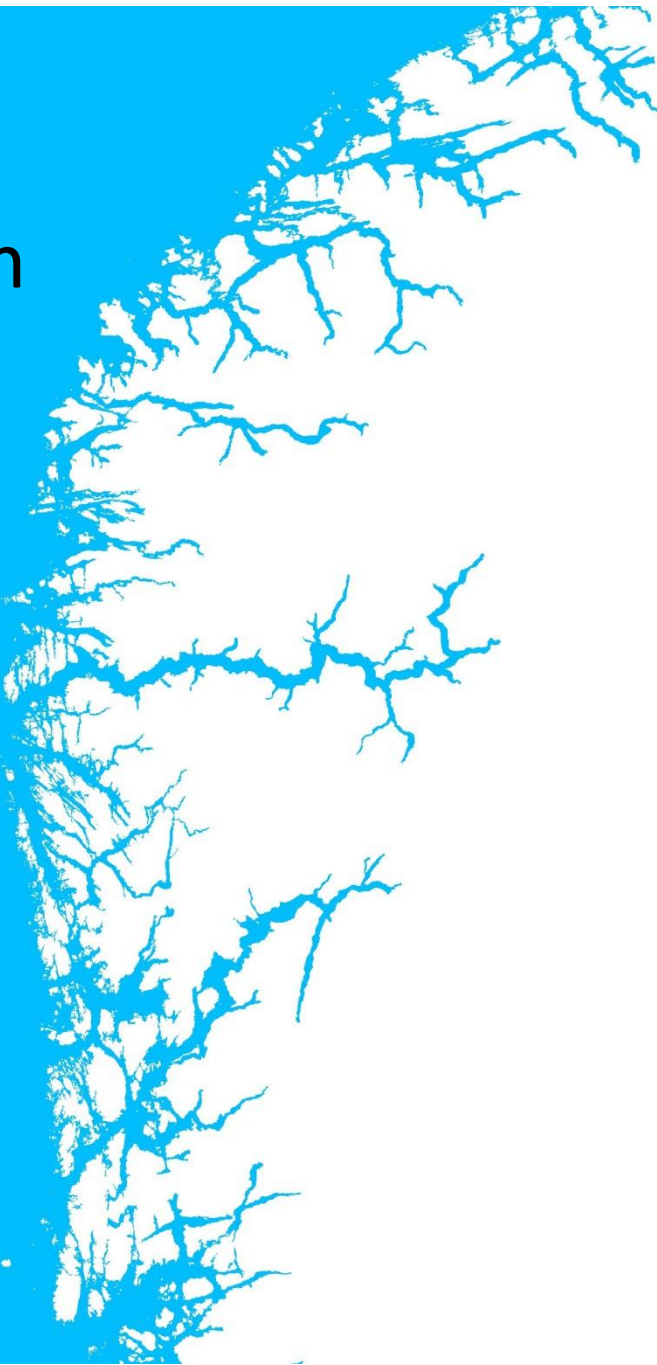
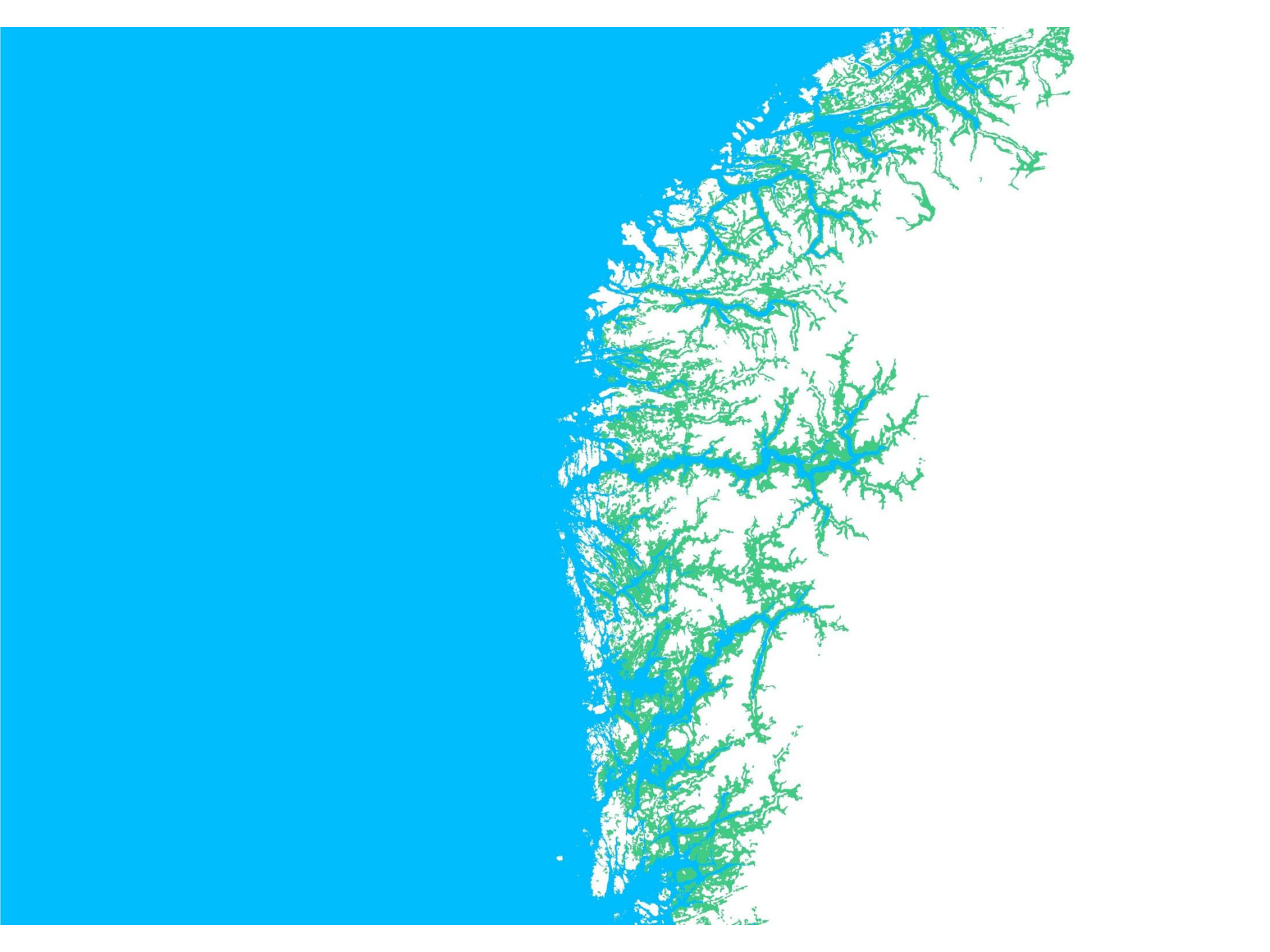
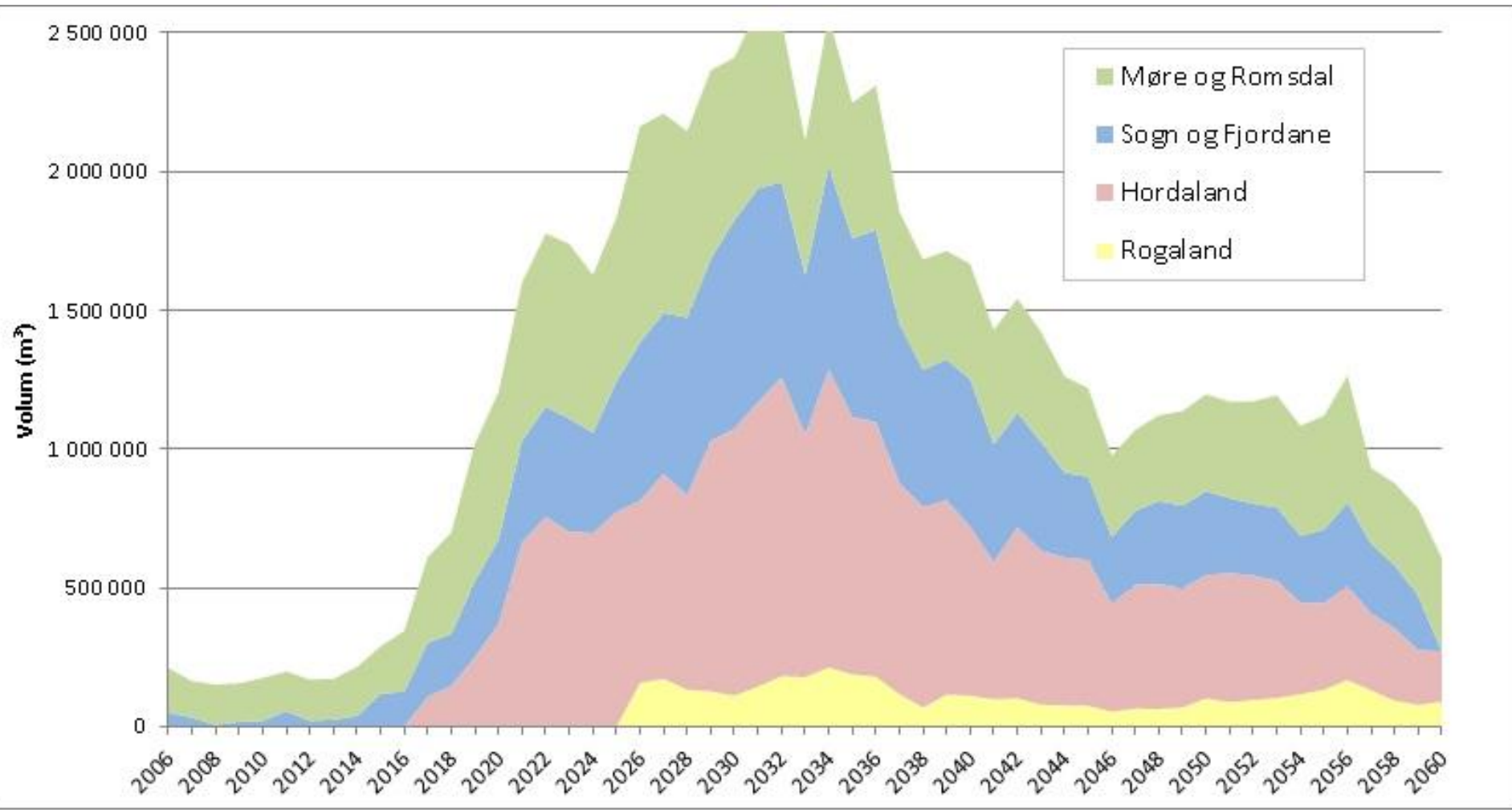


Vestlandet
ein (annerleies) region







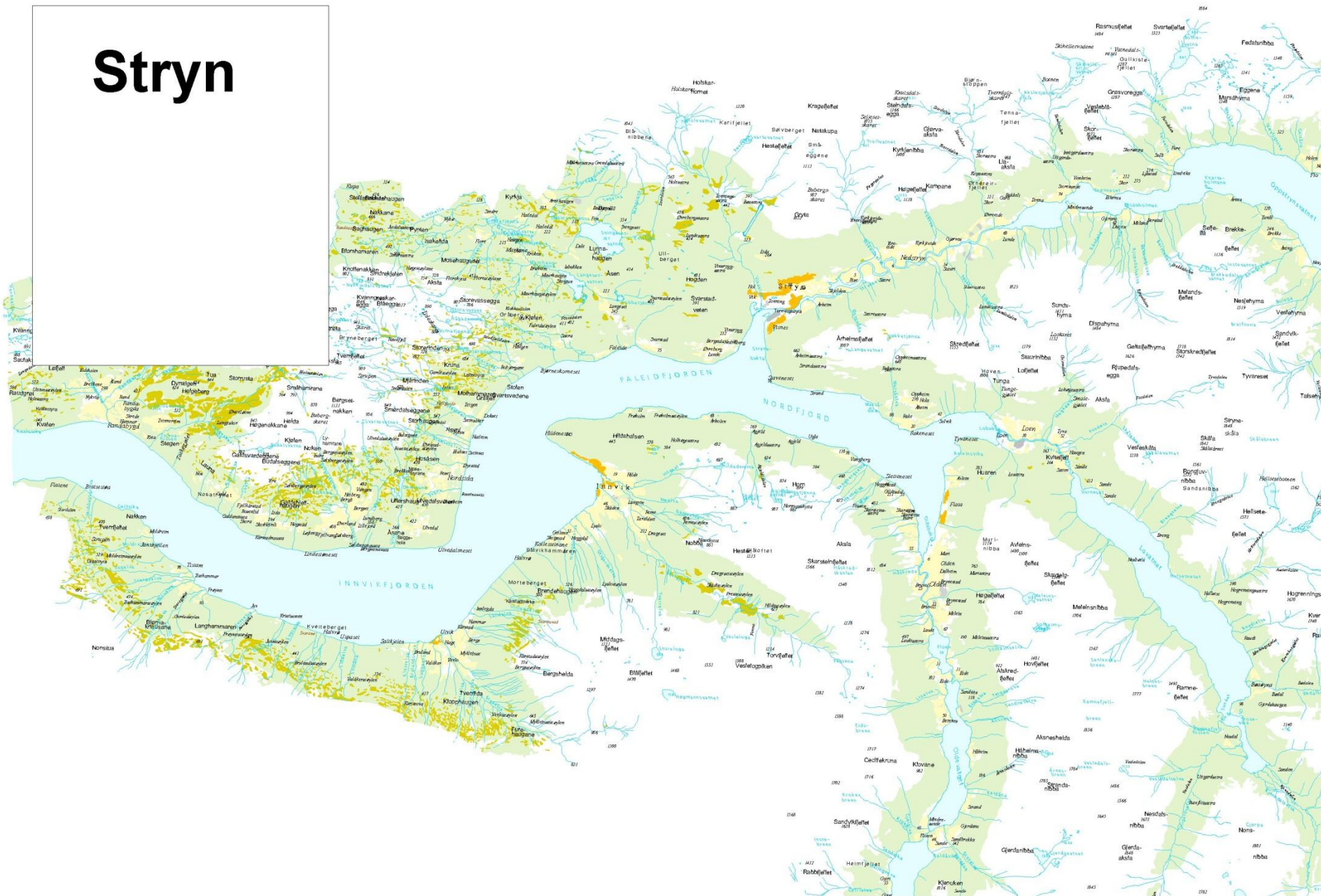
masse høner



908 36 249

fmsftmh@fylkesmannen.no

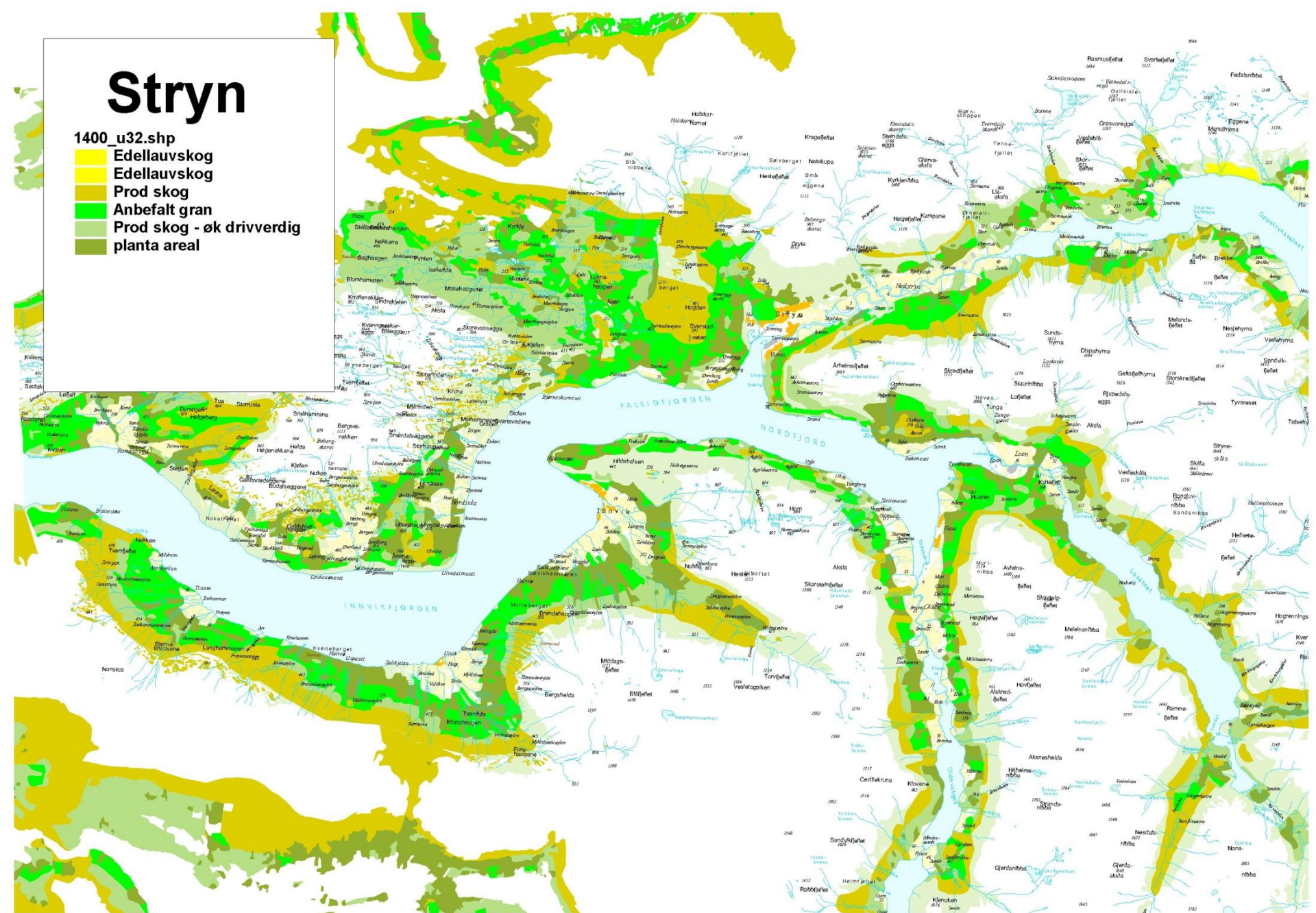
Stryn



Stryn

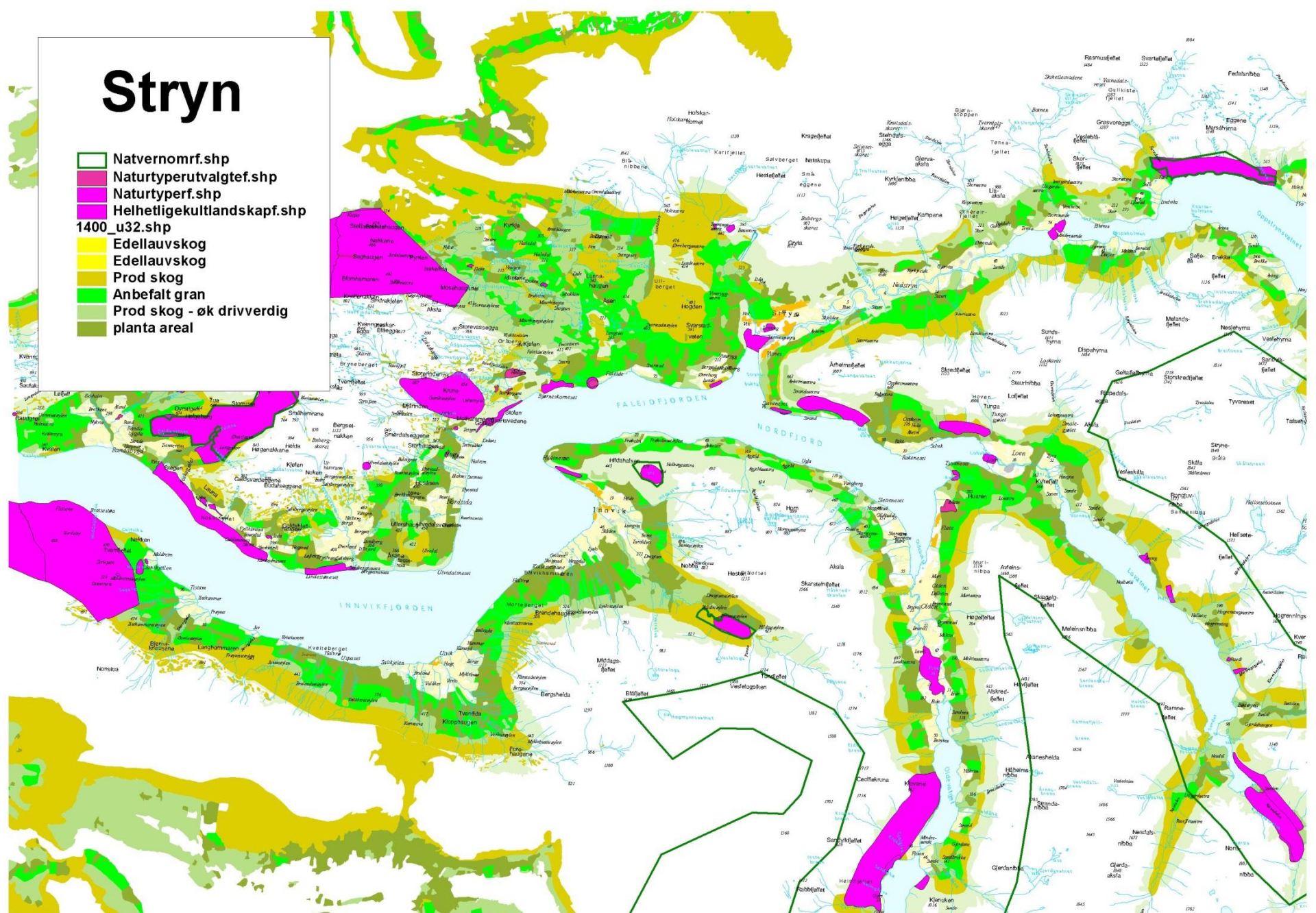
1400_u32.shp

- Edellauvskog
- Edellauvskog
- Prod skog
- Anbefalt gran
- Prod skog - øk drivverdig planta areal



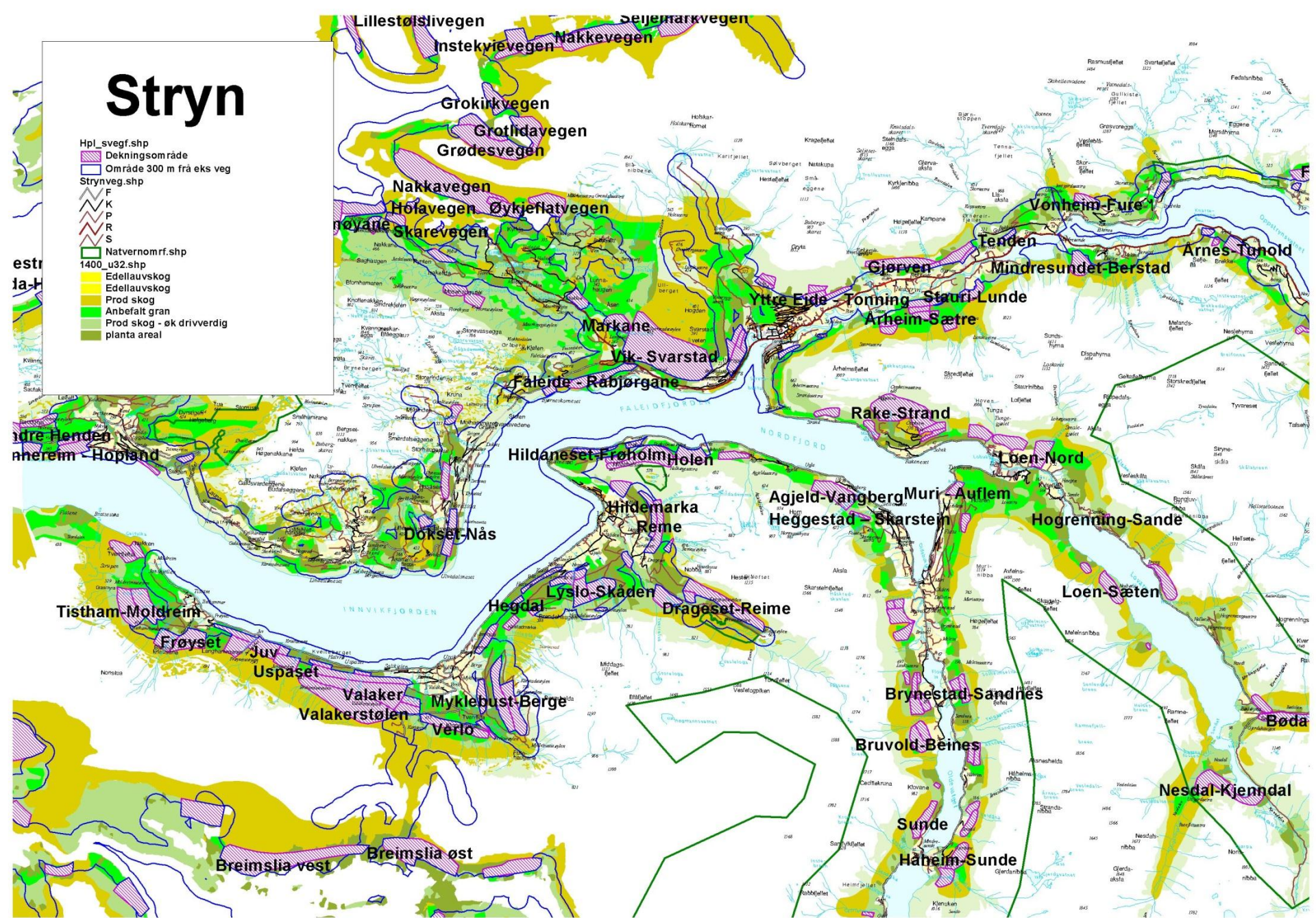
Stryn

- Natvernomrf.shp
- Naturtyperutvalgtef.shp
- Naturtyperf.shp
- Helhetligekultlandskapf.shp
- 1400_u32.shp
- Edellauskog
- Edellauskog
- Prod skog
- Anbefalt gran
- Prod skog - øk drivverdig planta areal



Stryn

- Hpl_vegfv.shp
Dekningsområde
Område 300 m fra eks veg
Strynveg.shp
F
K
P
R
S
Natvernornf.shp
1400_u32.shp
Edellauvskog
Edellauvskog
Prod skog
Anbefalt gran
Prod skog - øk drivverdig
planta areal



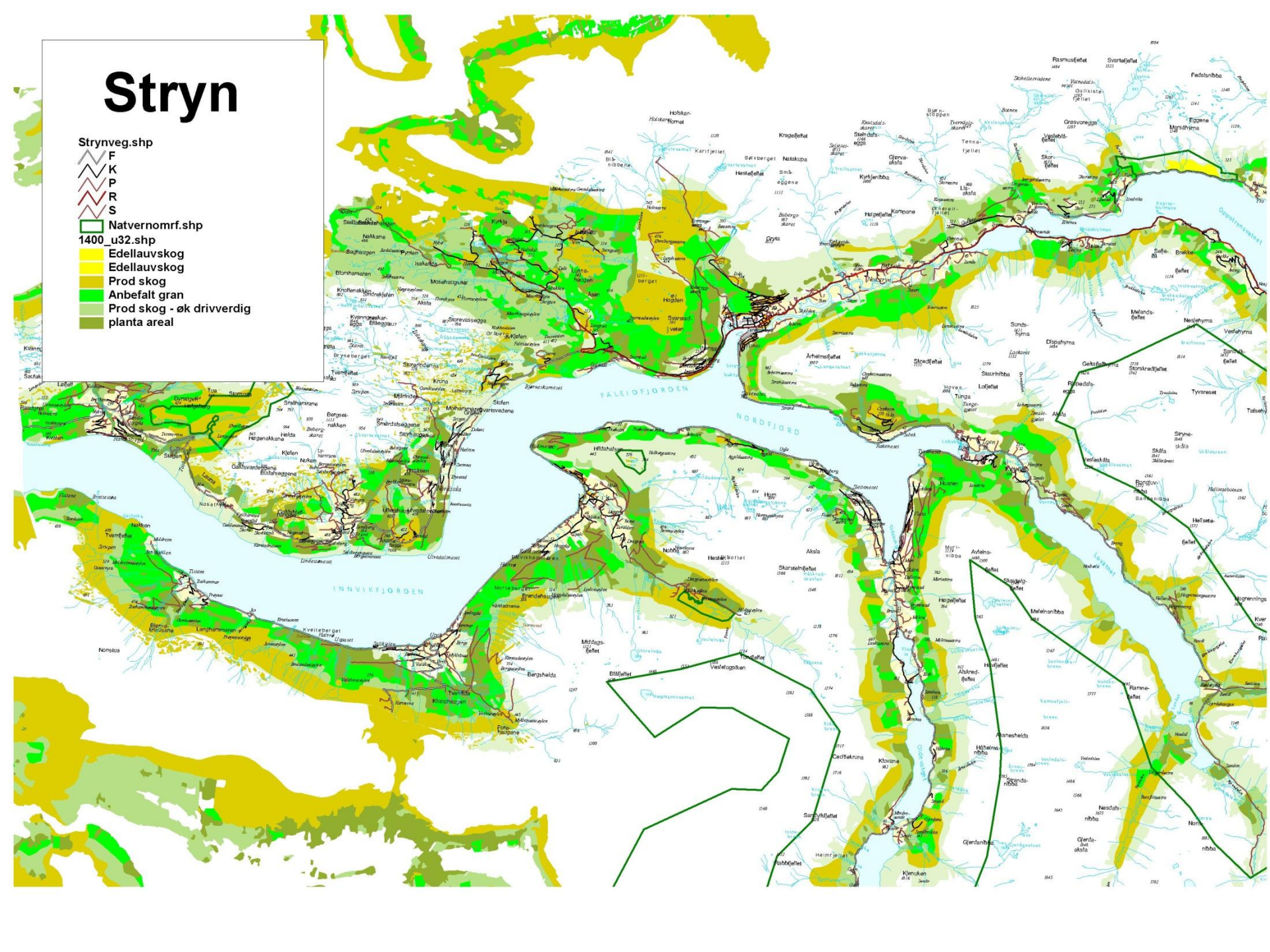
Stryn

Strynveg.shp



Natvernomrf.shp

1400_u32.shp



Stryn

Strynveg.shp

6-28

8-32

Strynveg.shp

F

K

P

R

S

Natvernomsf.shp

1400_u32.shp

Edellauvskog

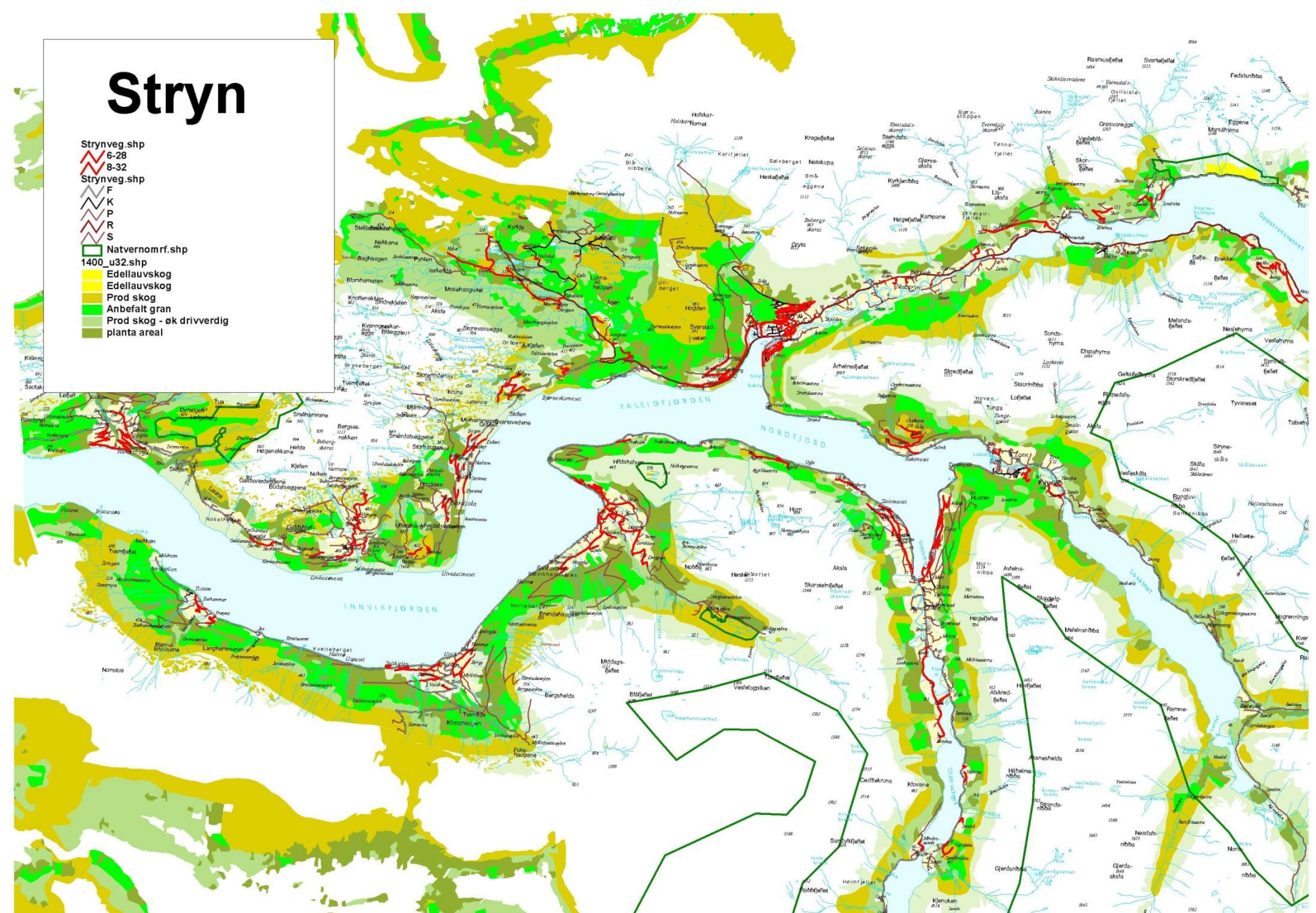
Edellauvskog

Prod skog

Anbefalt gran

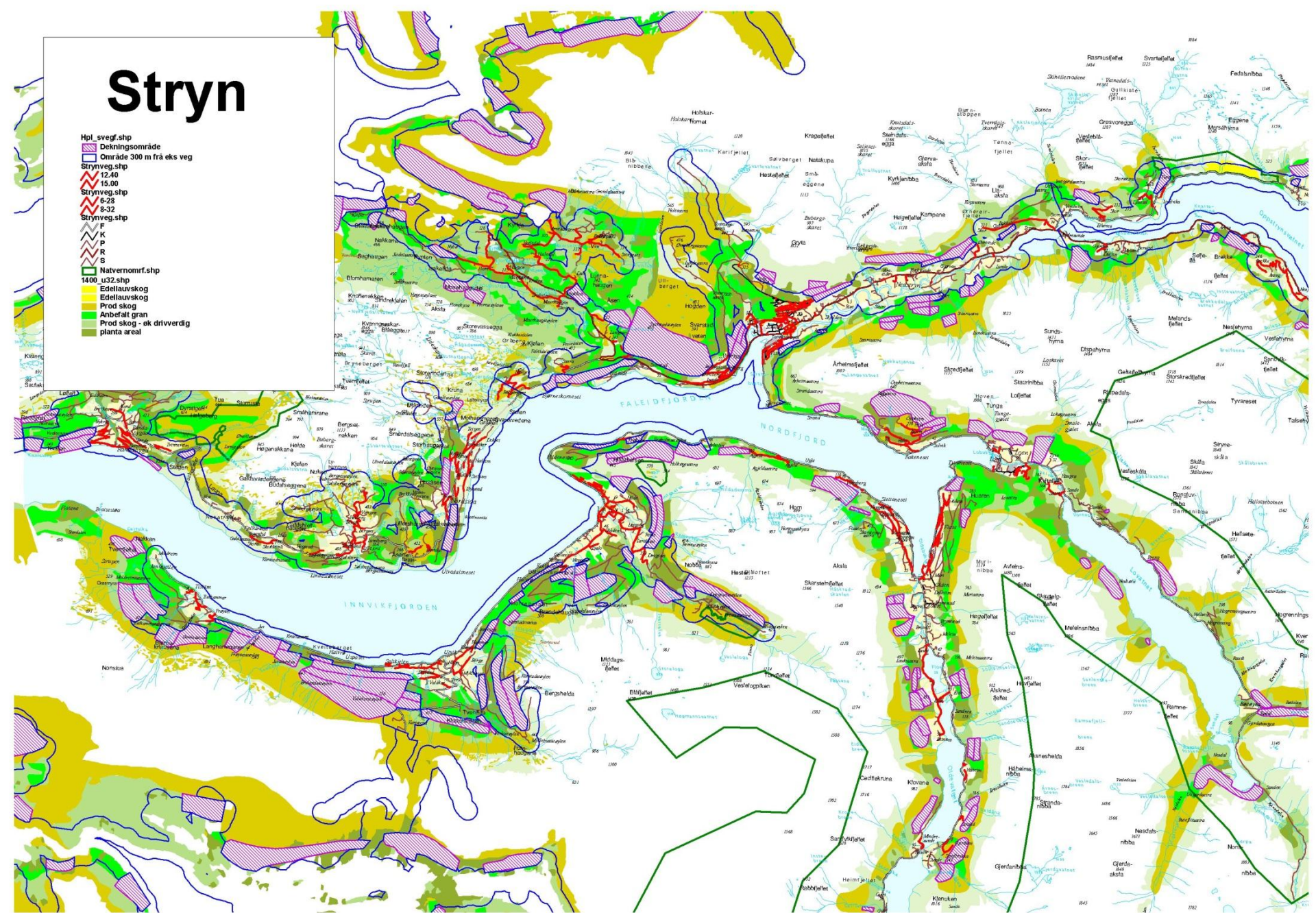
Prod skog - øk drivverdig

planta areal

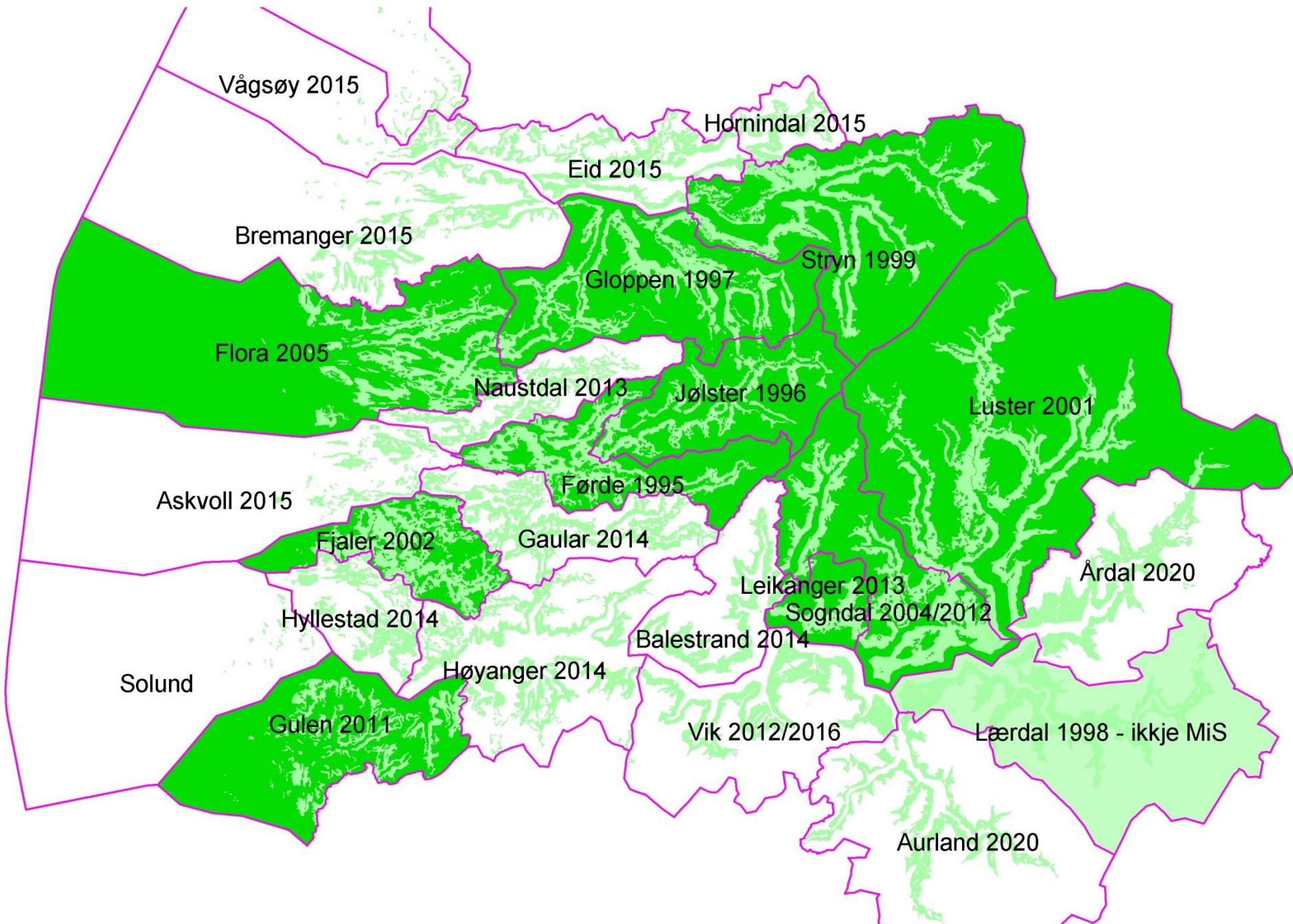


Stryn

- Hpl_svegf.shp
- Dekningsområde
- Område 300 m frå eks veg
- Strynveg.shp
- 12-40
- 15.00
- Strynveg.shp
- 6-28
- 8-32
- Strynveg.shp
- F
- K
- P
- R
- S
- Natvernomt.shp
- 1400_u32.shp
- Edellauvskog
- Edellauvskog
- Prod skog
- Anbefalt gran
- Prod skog - ek drivverdig planta areal









Statens landbruksforvaltning
Norwegian Agricultural Authority

Rapport-nr.: S/2013
15.02.2013

Skogbruksplanlegging

Formål, behov og organisering



